

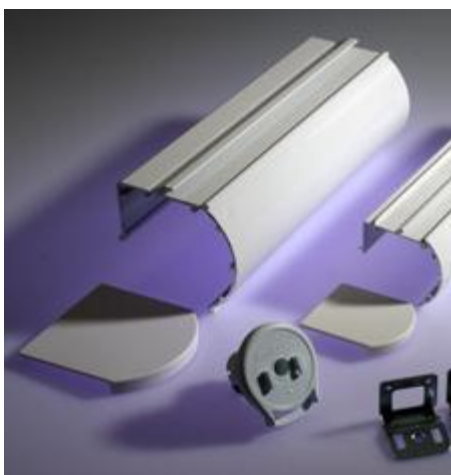
Product Cut Sheet: Cassette

Mariak Residential Roller Shade Cassette

For applications requiring elegant contemporary looks Mariak Industries Inc. offers a cassette. Curved front profile nicely blends with many interior decorating styles. Aluminum 3 1/2" by 3 1/2" extrusion provides space for roll of fabric up to 3 inches in diameter.

Snap-on mounting brackets allow for quick installation. Front of the cassette can be finished with the shade fabric. Internal brackets allow the cassette to be used with 15lb clutch or DC motor.

Roll: Available for regular roll or reversed roll
Color: White, Black, Alabaster, Bronze & Anodized
Mount: Inside or outside
Clutch: SL 15
Motor: DC
Control: Right or Left
Minimum Width: 20" Minimum Length: 20"
Maximum Width: 96" Maximum Length: 120"



Cassette

PRODUCT OVERVIEW:

- Quick and easy fabrication/installation
- Affords upscale, finished look
- Sleek look accommodates upscale commercial needs and affords greater residential appeal
- Sleek, curved design makes sunscreen fabrics more adaptable to residential use
- No visible brackets
- Intermediate bracket allows two shades in one headrail
- Available in high quality powder coated paint (white, black, alabaster, bronze & anodized) which is highly resistant to scratches and abrasion.
- Fabric insert option
- Up to 96 x 120 inch, 16 Mil fabric thickness on 1-1/2 inch (38mm) tube